

SOUTH AFRICAN

HOME

OWNER

R39,95 (VAT incl) Other countries R35,04
OCTOBER 2009

www.sahomeowner.co.za

SERVICEABLE
SCULLERIES

DRAPES
& DROPS

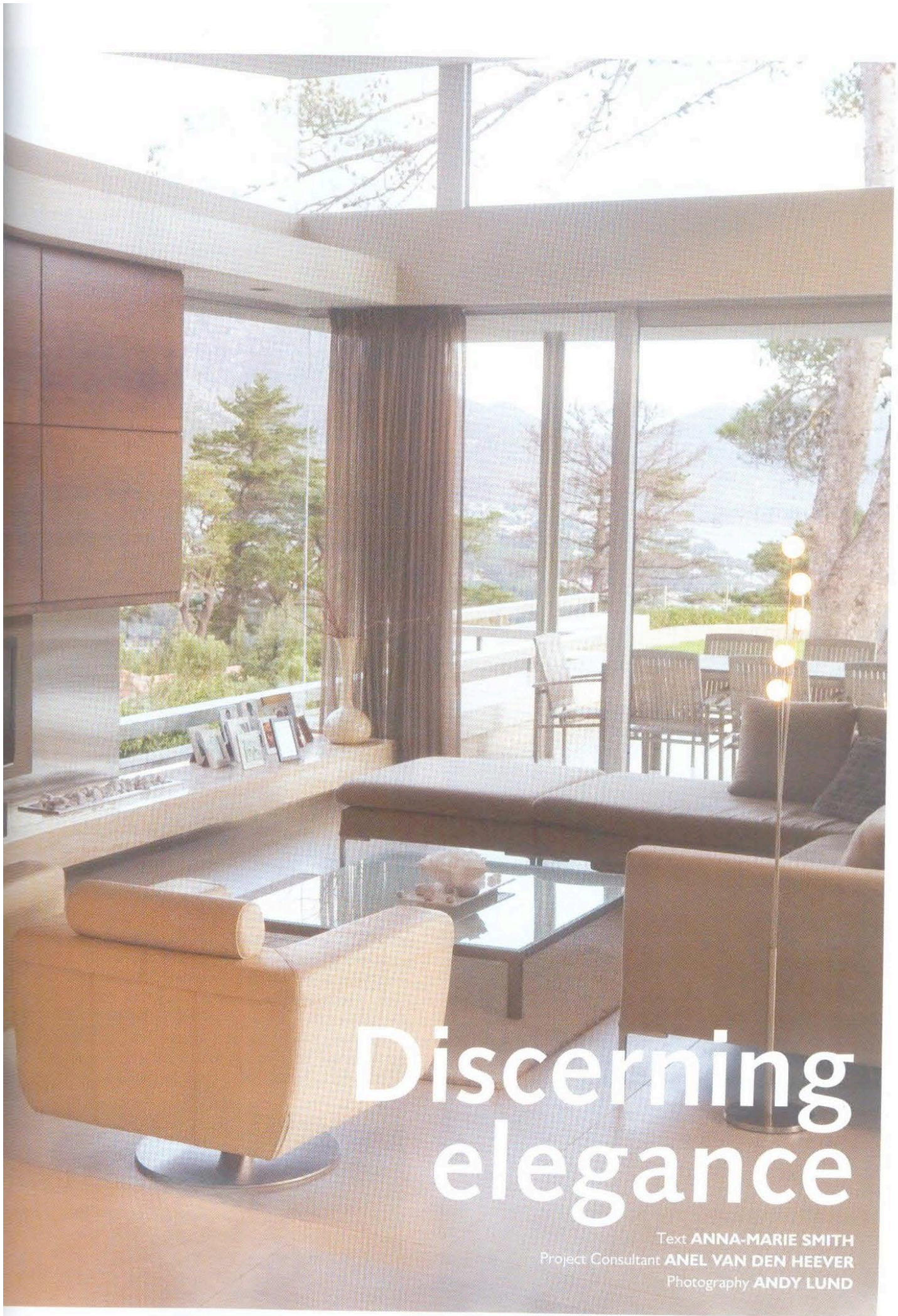
STYLISH
SHOPPING
HUBS

SAFE SUMMER
SWIMMING

SPECIAL FEATURE:

HOME AUTOMATION





Discerning elegance

Text ANNA-MARIE SMITH
Project Consultant ANEL VAN DEN HEEVER
Photography ANDY LUND



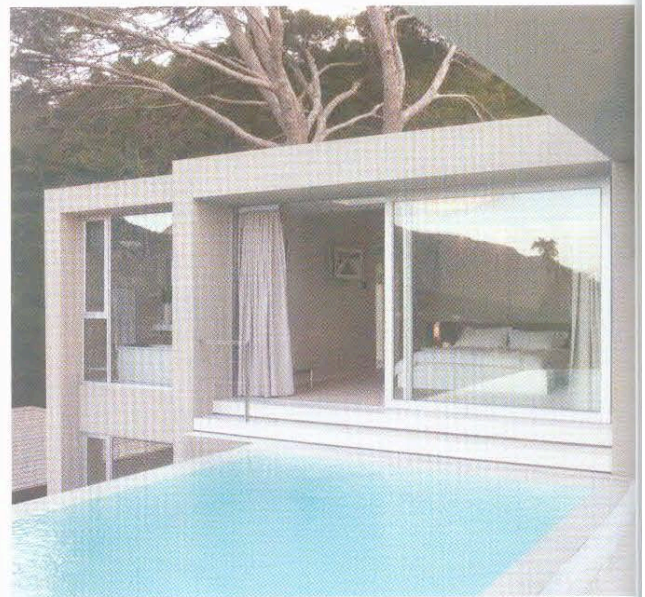
AMAZING SPACES 021 447 1902

THIS EXQUISITE HOME, located in Houtbay where residents are spoiled for choice with spectacular mountainside settings overlooking the ocean and much more, has an owner who proudly sees it as a sublime designer showpiece.

First impressions of this master design in a breathtakingly beautiful setting, just kilometers away from Llundudno and Bakoven, confirm the fine collaboration between the architect, owner and builder.

While both the exterior and interior exhibit dynamic, visually

COUNTRY WOODS 021 511 8604



pleasing symmetry, the outlines were shaped according to the lay of the land as well as the form manifested in the owner's mind from inception. He says that the position of the house itself complements the unusually long and narrow shape of the plot, one of the last to remain available in the estate after the owners lived nearby for some time. The owner says his architect deserves all the credit for his immaculate placement of the house on a property that slopes dramatically to the south and west.

It is the perfect harmony that was created between the natural outdoor environment and the house, from all angles – inside and out, that leaves a strong sense of understated elegance. Stunning timber applications and finishes, as well as natural surfaces and tones sit comfortably together from the outdoor entertainment area to the flowing living areas, bathrooms, kitchen and bedrooms. The owner says his personal involvement in the project allowed the sourcing of a fabulous selection of country woods that was installed by qualified carpenters under his supervision.

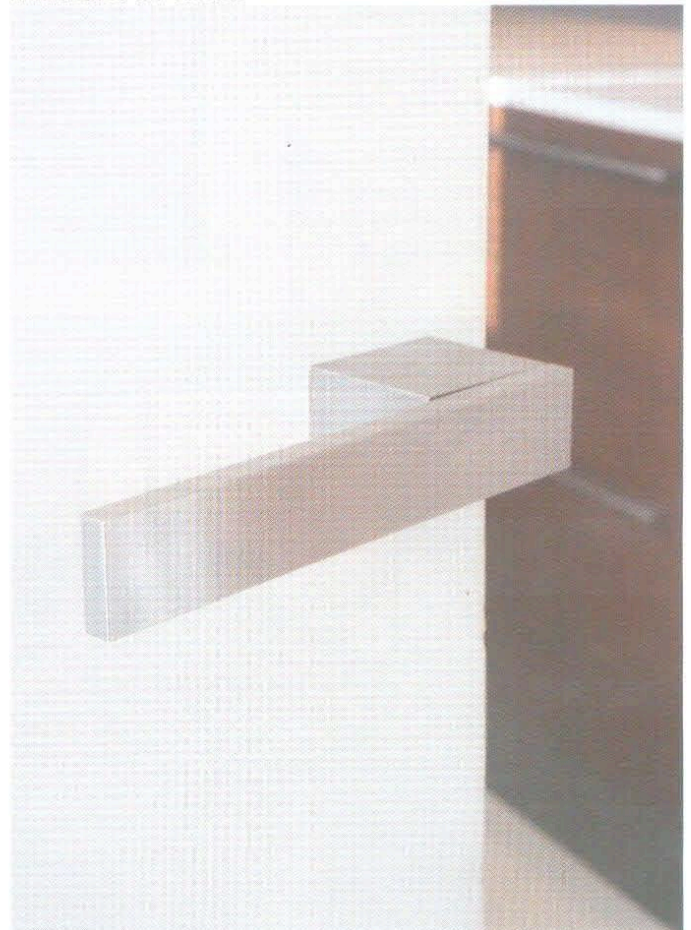
LEFT: Amazing Spaces, an industry pioneer and leading South African locations agency with a decade of experience, serves the film, photographic, events and accommodation industry through its dedication and passion for dynamic top-end success and profitability. Amazing Spaces offers a diverse portfolio created from its clientele's exclusive locations, both locally and abroad.

BELOW LEFT: Country Woods is a well established specialist timber merchant with 20 years of industry experience, and operates from Johannesburg, Durban and Cape Town. Also an affiliate of US-based Exotic Lumber, Country Woods imports and supplies a variety of beautiful timber such as the American white oak flooring and African rosewood in this house.



RIGHT: Handles Inc, an innovative shop for door couture, ranging from personalised handles to household accessories, provides products for the discerning South African market. Stocking 11 exclusive brands, including Olivari, it provides excellent service and expert advice. The popular "Total" handle from the chic Italian reported Olivari range offers an eco-conscious product with environmentally friendly Biochrome properties.

HANDLES INC 021 422 2322



One of the many striking visual pleasures provided by the interior aesthetics is that during daylight hours every room offers an abundance of sunshine entering at various levels through broad bands of glazing. It resulted in fascinating interior spaces created by framing the beautiful outdoors into magnificent works of art from the interior.





BOTTOM: Exquisite Bathrooms is an established sanitaryware and plumbing supply company specialising in quality approved brands such as Valcer Ceramica, Kerasan Ceramic, Newform Rubinetterie, SpA, Albertoni and Boffi. From its showrooms in Johannesburg, Town, George and Pretoria, Exquisite Bathrooms offers professional and specialised service to architects, interior designers, specifiers, developers, contractors, builders and home owners.

The spacious living areas that flow seamlessly for effortless entertainment and daily living exhibit beautiful clean lines complemented by designer furniture, custom made and selected with great care. Exquisite bathrooms adorn this house where every inch of space is filled with luxurious finishes and fittings that provide comfortable surroundings from where to enjoy panoramic views. Aesthetics in this house take on another dimension due to the exquisite imported timber flooring that, in combination with other fine design elements such as subtle lighting, beautiful textures and fine finishes, highlight its beauty.

This gorgeous home offers its owners a tailor-made environment created through meticulous planning, masterful craftsmanship and impeccable finishing. 🏡



EXQUISITE BATHROOMS 021 674 0080



DISCERNING ELEGANCE

CONTACTS:

Amazing Spaces –
premier locations agent
021 447 1902,
robyn@amazingspaces.co.za
www.amazingspaces.co.za

Country Woods –
specialist timber merchant
021 511 8604, cntrywdct@iafrica.com
www.countrywoods.co.za

Exquisite Bathrooms –
exclusive bathroom supplies
021 674 0080, andre@exb.co.za
www.exb.co.za

Handles Inc –
personalised door couture
011 325 2555, info@handlesinc.co.za
www.handlesinc.co.za